



Mobile Log Editing

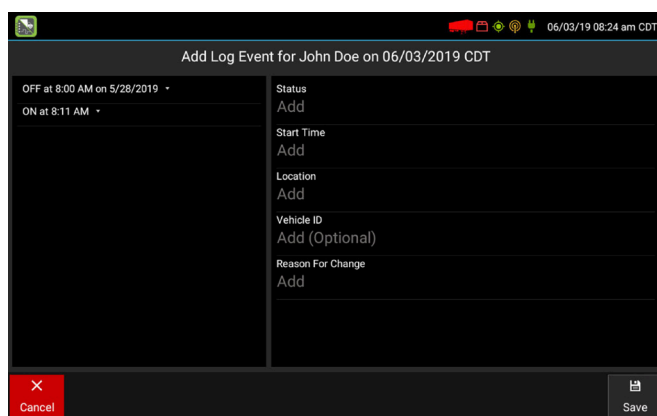
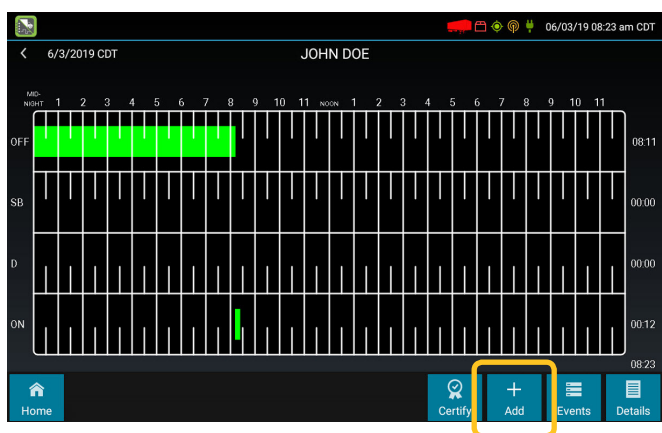
Carriers and drivers are solely responsible for ensuring that this system is used properly and in compliance with all hours of service and other FMCSA laws and regulations.

With eDriver Logs® ELD mobile version 3.0 or higher, drivers are able to edit their logs directly from the device for any log date available on the device (7 or 14 days, depending on United States or Canadian driver types). This feature is available to all drivers and allows them to manage their logs without the need to sign in to the driver portal website or have their carrier propose edits.

Per ELD requirements, only certain log events can be edited. ELD events such as intermediate logs, ELD login and logout, engine power up and shut down, and malfunctions and data diagnostics cannot be edited or deleted. ELD-recorded (automatic) driving events and the event immediately following the automatic drive, system-generated remarks, and the driver's current open status also cannot be edited or deleted. If an edit is required to the driver's open status, they must first change their status through the **Status** button on the **Driver Overview** to end the open event.

Adding New Log Events

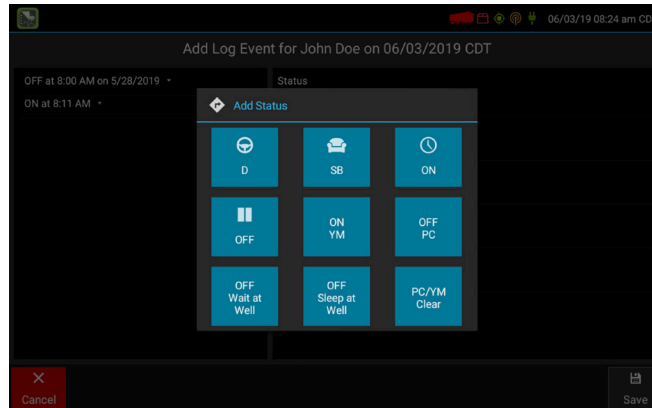
To add a new log event, tap **Logs** from the **Driver Overview**. To add an event to the log date displayed, tap **Add** to open the new status details screen. To add an event to a different log date, use the arrows next to the date in the upper left hand corner or swipe left or right on the grid to navigate to the correct date.



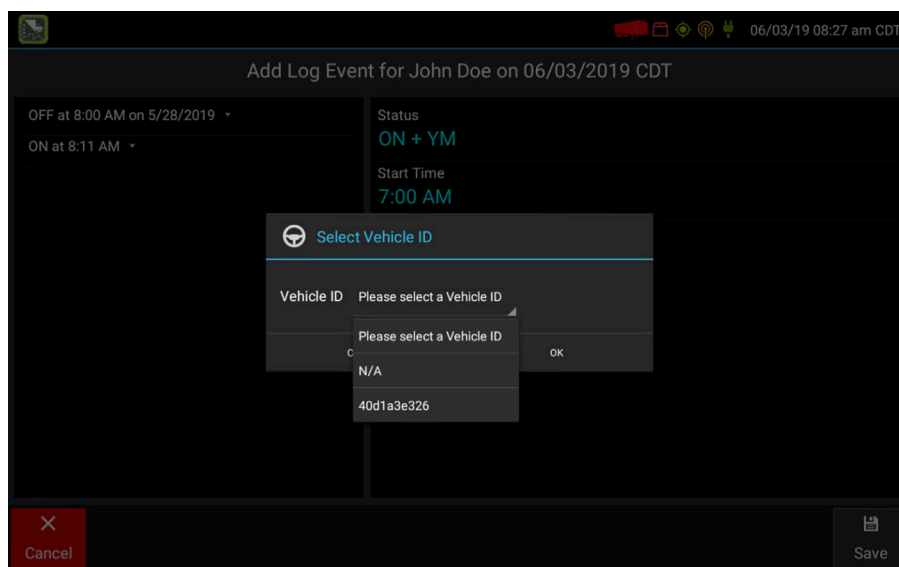
The right pane of the new status page shows the fields that need to be populated. The left pane shows a summary of the driver's existing status changes for the log date. Tap the status changes on the left to view additional details.

NOTE: New status changes cannot be added during an automatic driving event. A start time must be entered before or after any driving events on the log. New status changes also cannot be added with the same start time as an event already present on the log.

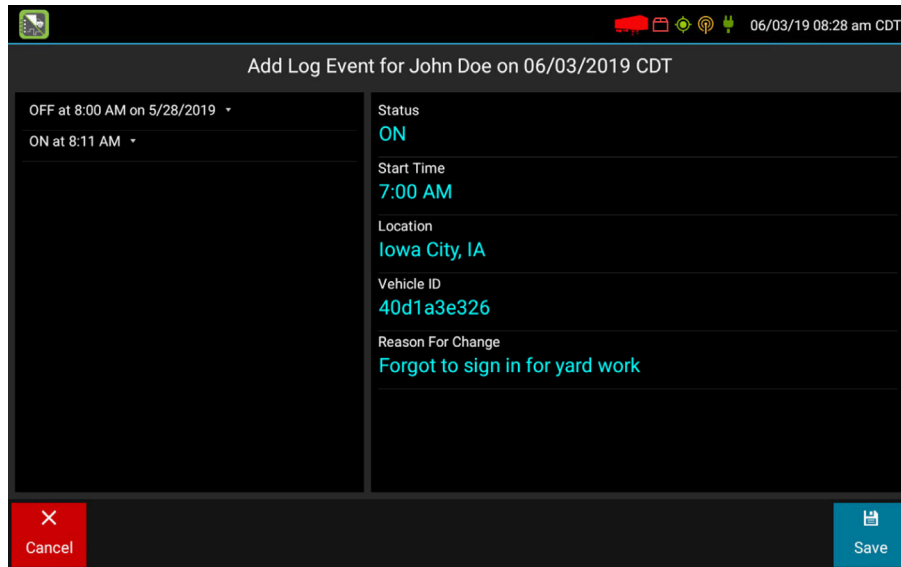
Tap to select the **Status, Start Time, Location, Vehicle ID** (optional), and **Reason For Change**. The driver will be provided a list of statuses to select from as allowed by their carrier and as applicable for their driver type. Not all statuses will be available for all drivers.



The vehicle ID selection is optional and allows the driver to choose from the current vehicle ID, other vehicle IDs they have used on log dates available on the device (7 or 14 days), or "N/A" if the status being added did not occur on any of the available vehicles.



Once the event details have been entered, add a Reason for Change, then tap **Save** to finish and add the new event to the log. Tap **Cancel** to return to the log without saving any changes.

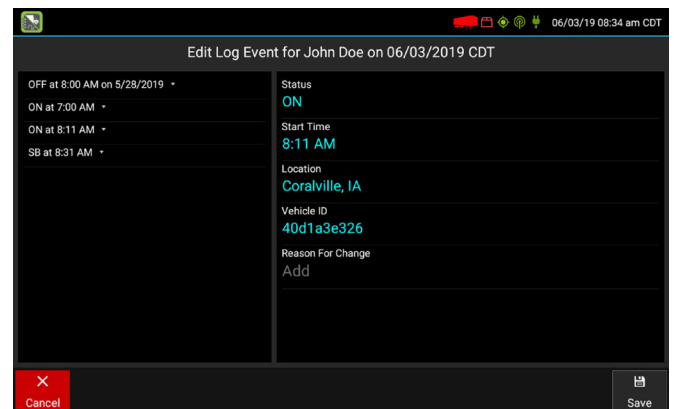
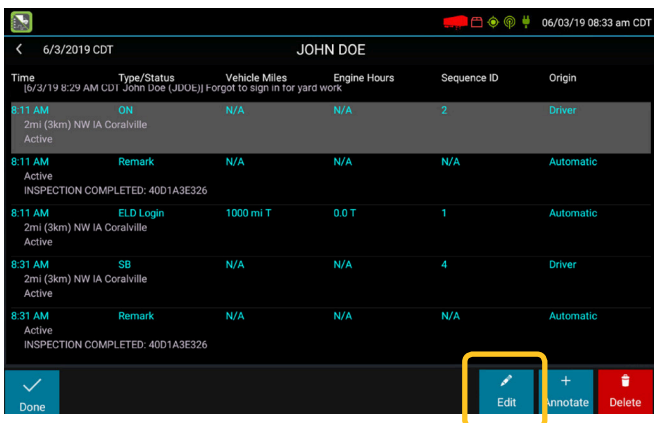


Editing Existing Log Events

ELD-recorded driving events and the event immediately following an automatic drive cannot be edited.

Existing events on the driver's log can be edited through the **Logs-Events** screen. If the driver needs to shorten the on duty event following an automatic driving event, they can do so by adding a new event or editing the start time of the duty status following the on duty. Personal Conveyance and Yard Moves events cannot be edited at this time but can be added or deleted using mobile log edits.

To edit an event, tap **Events** from the log grid view then tap to select the event to be edited. To edit an event spanning multiple days, navigate to the date the event started.



Tap **Edit** to make corrections to the event. Tap the field(s) on the right to edit them. A summary of status changes for the log day is displayed in the pane on the left for reference. Tap an event to display the event details. When the necessary changes have been made, tap to enter a Reason for Change, then tap **Save** to finish and update the event.

Per ELD requirements, the original event being edited will be changed to a record status of **Inactive-Changed** and the edited event is added to the log as a new Active event.

Time	Type/Status	Vehicle Miles	Engine Hours	Sequence ID	Origin
8:11 AM	Remark	N/A	N/A	N/A	Automatic
Active INSPECTION COMPLETED: 40D1A3E326					
8:11 AM	SB	N/A	N/A	5	Driver
Coralville, IA Active [6/3/19 8:37 AM CDT John Doe (JDOE)] Was in SB					
8:11 AM	ON	N/A	N/A	2	Driver
2mi (3km) NW IA Coralville Inactive - Changed [6/3/19 8:37 AM CDT John Doe (JDOE)] Was in SB					
8:31 AM	SB	N/A	N/A	4	Driver
2mi (3km) NW IA Coralville Active					
8:31 AM	Remark	N/A	N/A	N/A	Automatic
Active INSPECTION COMPLETED: 40D1A3E326					

Deleting Existing Log Events

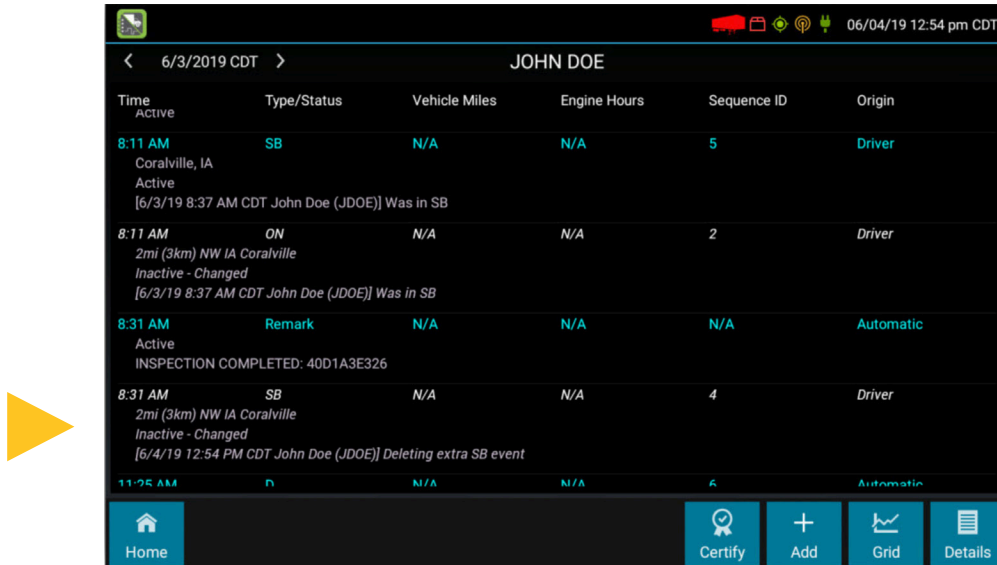
ELD-recorded driving events and the event immediately following an automatic drive cannot be deleted.

Existing events on the driver's log can be deleted through the **Logs-Events** screen. Other types of ELD events such as ELD Login/Logout and Intermediate Logs also cannot be deleted. To delete an existing log event, tap **Events** from the log grid view, then tap to select the event that needs to be deleted.

Time	Type/Status	Vehicle Miles	Engine Hours	Sequence ID	Origin
8:11 AM	ON	N/A	N/A	2	Driver
2mi (3km) NW IA Coralville Active					
8:11 AM	Remark	N/A	N/A	N/A	Automatic
Active INSPECTION COMPLETED: 40D1A3E326					
8:11 AM	ELD Login	1000 mi T	0.0 T	1	Automatic
2mi (3km) NW IA Coralville Active					
8:31 AM	SB	N/A	N/A	4	Driver
2mi (3km) NW IA Coralville Active					
8:31 AM	Remark	N/A	N/A	N/A	Automatic
Active INSPECTION COMPLETED: 40D1A3E326					

Time	Type/Status	Vehicle Miles	Engine Hours	Sequence ID	Origin
INSPECTION COMPLETED: 40D1A3E326					
8:11 AM	SB	N/A	N/A	5	Driver
Coralville, IA Active [6/3/19 8:37 AM CDT John Doe (JDOE)] Was in SB					
8:11 AM	ON	N/A	N/A	2	Driver
2mi (3km) NW IA Coralville Inactive - Changed [6/3/19 8:37 AM CDT John Doe (JDOE)] Was in SB					
8:31 AM	SB	N/A	N/A	4	Driver
2mi (3km) NW IA Coralville Active					
8:31 AM	Remark	N/A	N/A	N/A	Automatic
Active INSPECTION COMPLETED: 40D1A3E326					
11:25 AM	D	N/A	N/A	6	Automatic

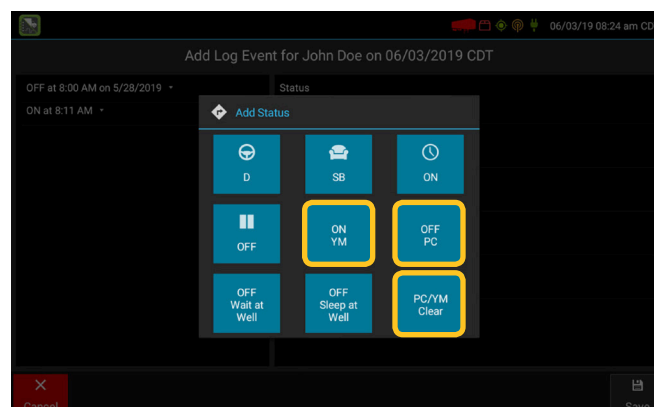
Tap **Delete** and enter a **Reason for Change** to delete the event. When an event is deleted, it is changed to a record status of **Inactive-Changed** and the previous duty status is extended to fill the gap.



Editing Personal Conveyance and Yard Moves Events

When editing or adding Personal Conveyance (PC) or Yard Moves (YM) events, note that both the PC or YM special driving category event and a PC/YM Clear event must be present for the special driving category color coding on the log grid to be accurate. To add a new PC or YM period to the log, add both an OFF PC or ON YM event at the start of the period and a PC/YM Clear event at the end. Failing to add the PC/YM Clear event will result in the special driving category color coding being applied to all subsequent events on the log grid until another special driving category period is applied or ended.

When adding new events, the ON YM option will add both an on duty status and a Yard Moves special driving category event to the log at the start time selected. Similarly, the OFF PC option will add both an off duty status and an Authorized Personal Use of CMV (PC) special driving category event to the log at the start time selected. If the log already contains an on duty or off duty event at the time selected, only the special driving category event will be added.



To remove PC and YM events from the log, delete both the OFF PC or ON YM event at the start of the period and a PC/YM Clear event at the end. Deleting a PC/YM Clear event without deleting the OFF PC or ON YM event will result the special driving category color coding being applied to all future log events.

PC and YM special driving category events cannot be edited or added independent of an accompanying off or on duty status at this time. To change the start time of a special driving category, delete the existing event then add a new PC or YM event at the correct time.

Mobile Log Editing Questions and Answers

Which events can't be edited?

The driver's current open status, automatic driving events and the event immediately following an automatic drive, system-generated remarks, and events that started on a date different than the log currently displayed cannot be edited. Personal Conveyance and Yard Moves events cannot be edited, only deleted. Events that started more than 7 or 14 days ago (depending on the driver type) must be edited on the Driver Portal. Automatically-recorded ELD events such as ELD login/logout, intermediate logs, and malfunctions and diagnostic events also cannot be edited or deleted.

Why can't an automatic driving event or the following event be edited?

ELD regulations prohibit allowing an automatic driving event to be shortened or removed from a driver's log. eDriver Logs ELD cannot allow a driver to edit the driving event or following event in order to preserve the duration of the original automatically-recorded event. If a driving event was recorded with a missing location and the driver wants to fill in the city and state where the event began, that can be added through the **Options–Missing Data** feature on the device or on the host.

What if the driver needs to change the start time of their current open event?

In order to change the start time of their open event, the driver first needs to end the event by changing their status through the **Status** button on the **Driver Overview** screen. Once they have changed status and ended the event, they can then navigate to **Logs** and make any necessary edits.

Why wouldn't the driver be allowed to add a new event?

The driver will not be permitted to add a new event if the start time selected is during an automatic Driving event, after the start of their current open status, or at the exact same start time as an existing event on the log. They can annotate but cannot shorten or delete an automatic driving event and must use the **Status** button from the **Driver Overview** screen to end their open status before making edits.

What happens when an event is deleted?

When an event is deleted, it is changed to a Record Status of **Inactive-Changed**. Per ELD requirements, events cannot and will not be completely erased from the driver's log. The original event is retained in **Inactive-Changed** status to preserve a record of the log history. After an event is deleted, the previous status will be extended to fill the gap.

Can the driver edit their log resources on the device?

At this time, only status changes and special driving category events can be edited on the device. If a driver needs to update their resources (trailers, shipments, co-drivers, etc), they must sign in to the driver portal or have their carrier make the necessary changes.

What if the driver forgot to sign out of a different device than they are using today?

If the driver did not sign out of the device used in their previous shift, they must first sign out of that device before making any edits to their log. Once they have verified that they are signed out properly, the driver must navigate to **Options-Request Logs** to update their logs on the device they will be using for the current shift. After they have signed out and ensured that their logs on the current device are up to date, they can then edit their log as needed.

UNITED STATES

Trimble Transportation
4400 Baker Road
Minnetonka MN 55343

CANADA

Trimble Transportation
1100 Burloak Drive
Suite 300 Burlington
Ontario Canada L7L 6R2

CONTACT

+1-866-914-5299 Phone
+1-952-908-6129 Fax
TM_Information@trimble.com
mobility.trimble.com