

JOIN THE BATTLE. BEAT THE BUG.

The spotted lanternfly is an invasive insect that is putting American agriculture and forests at risk. Join us. Together, we can stop the spread of this destructive pest.

DRIVER'S CHECKLIST

Life stages of the spotted lanternfly



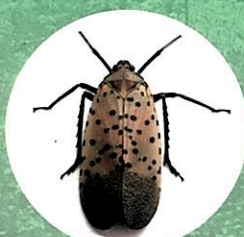
Egg mass
Sept.-June



Early nymph
April-July



Late nymph
July-Sept.



Adult
July-Dec.

Before you leave your company lot or work site, check for spotted lanternflies on your vehicle's:

- Doors and sides
- Grill
- Bumpers
- Wheel wells
- Roof
- Cargo

Remember to park away from trees when possible, and close windows to keep spotted lanternflies out.

Check items stored outside for the pest before moving them to a new location:

- Propane tanks
- Outdoor machinery
- Wooden pallets
- Shipping containers

When you find an egg mass:

- Scrape it into a plastic bag or container that contains rubbing alcohol or hand sanitizer.

When you find a nymph or an adult:

- Squash it.

If you drive outside the quarantine* area, report any spotted lanternflies you see to:

extension.psu.edu/spotted-lanternfly
888-4-BADFLY

Comply with permitting requirements for businesses. Learn more at agriculture.pa.gov.

* Find out if you're in the state quarantine area at agriculture.pa.gov

